

# Working device of solar power generation



## Overview

---

To harness solar energy effectively, specific equipment is essential. Inverters convert DC to AC, 3. Monitoring systems track. Solar technologies convert sunlight into electrical energy either through photovoltaic (PV) panels or through mirrors that concentrate solar radiation. These photons contain varying amounts of.

## Working device of solar power generation

---



### [How do solar panels work? Solar power explained](#)

Solar panels work by converting incoming photons of sunlight into usable electricity through the photovoltaic effect.

### Future Member FAQs

Working Not Working uses a creative profile template to allow our members a number of ways to express their skills, experience, and portfolio. This short video covers the most important ...



### Solar energy

solar cell, any device that directly converts the energy of light into electrical energy through the photovoltaic effect.



### [Photovoltaics and electricity](#)

A photovoltaic (PV) cell, commonly called a solar cell, is a nonmechanical device that converts sunlight directly into electricity. Some PV cells can convert artificial light into electricity.



### WNW MAGAZINE

Working Not Working Magazine is an online platform celebrating work and stories from the Universe's most creative creators. The magazine offers a selection of features, ...

### [Working Not Working -- WNW MAGAZINE](#)

Discover more creative talent, projects, and perspectives like this on Working Not Working. If you're a WNW Member with new work, exhibits, products, news, or opinions to ...



### [Working Not Working Magazine](#)

Working Not Working Magazine is an online platform celebrating work and stories from the Universe's most creative creators. The magazine offers a selection of features, interviews, op ...

### [Feeling Stuck? 5 Steps to Create Change in Your Working Life](#)

Discover more creative talent, projects, and perspectives like this on Working Not Working. If you're a WNW Member with new work, exhibits, products, news, or opinions to ...



### [What equipment is used for solar power generation? . NenPower](#)

To harness solar energy effectively, specific equipment is essential. 1. Solar panels convert sunlight into electricity, 2. Inverters convert DC to AC, 3. Mounting systems secure the ...

### [The Working Mechanism of Solar Power Generation Systems](#)

Learn the detailed working mechanism of solar power generation systems, converting sunlight into clean, renewable electricity.

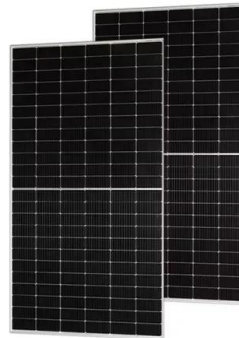


### **How do solar cells work?**

Just like the cells in a battery, the cells in a solar panel are designed to generate electricity; but where a battery's cells make electricity from chemicals, a solar panel's cells generate ...

[50 People & Companies Inspiring the Working Not Working ...](#)

Want to hire inspiring creative people and the people with impeccable taste who voted for them? Join Working Not Working. Find Talent on WNW



[Solar Cell: Working Principle & Construction \(Diagrams Included\)](#)

A solar cell (also known as a photovoltaic cell or PV cell) is defined as an electrical device that converts light energy into electrical energy through the photovoltaic effect.



[How to Use Working Not Working to Land a Job at a Top ...](#)

Discover more creative talent, projects, and perspectives like this on Working Not Working. If you're a WNW Member with new work, exhibits, products, news, or opinions to ...



[How to Tackle Employee Turnover in 2024: Lessons from ...](#)

Working Not Working's HR Brew appearance dives into #QuitTok, employee turnover, and how focusing on talent brand and positive workplace culture drives retention.

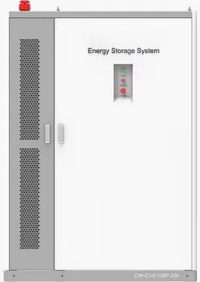


## How Does Solar Work?

Solar technologies convert sunlight into electrical energy either through photovoltaic (PV) panels or through mirrors that concentrate solar radiation. This energy can be used to generate electricity or be ...



**PRODUCT INFORMATION**



- BATTERY CAPACITY**  
50kWh~500kWh
- DC VOLTAGE RANGE**  
400V~1000V
- DEGREE OF PROTECTION**  
IP54
- OPERATING TEMPERATURE RANGE**  
-10~50°C

## Active Members FAQs

How can I see Creatives who want to work for my company?

## [How does solar power work?](#)

Learn how solar power works, from the photovoltaic effect to AC conversion, with clear explanations of clean, renewable solar energy and panel technology.



## Contact Us

---

For catalog requests, pricing, or partnerships, please visit:  
<https://motocykle3city.pl>