

The inverter also has voltage input at night



Overview

At night, the off grid solar inverter runs only on the battery bank, which provides a more uniform voltage until it's close to depletion. This is a built-in safety mechanism designed to protect your battery from being discharged too deeply. For example, a 12V system may. Solar inverters turn off at night when there is no sunlight to convert into electricity.

The inverter also has voltage input at night



[Understanding the O at Night Function in Solar Power Inverters](#)

The 6.25/6.8 MVA inverter is designed with the Q at Night function, allowing it to provide essential reactive power support when solar generation is offline. This capability not only contributes ...

[Does a Solar Inverter Work at Night? Here's the Real Answer](#)

The short answer is no--solar inverters do not produce or convert energy at night because they rely on sunlight to generate electricity. Solar inverters are designed to convert the DC ...



[Why Do Solar Inverters Have A Night Mode?](#)

Night mode indicates that the inverter is not detecting voltage from the solar array. In this state, checking the shutdown voltage on the inverter's display is essential, as optimizers output 1 volt ...



[What Happens to Solar Inverters at Night? Do They Shut Down?](#)

While solar inverters do not shut down completely at night, they enter a standby or low-power mode to conserve energy and optimize efficiency. This standby mode ensures the inverter ...



[Does the Solar Inverter Turn Off at Night?](#)

This article explains whether solar inverter will turn off at night, why inverter automatically enter standby or shut off mode at night due to insufficient solar voltage, and how to obtain stable ...

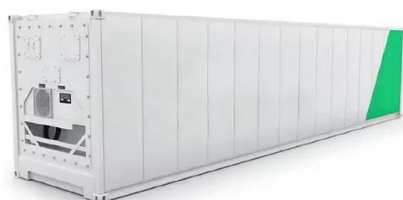
[Do Solar Inverters Turn Off At Night?](#)

While solar inverters do not work at night due to the absence of sunlight, they react to the drop in power input and enter standby or sleep mode to conserve energy.



[Do Off-Grid Solar Inverters Use Power at Night?](#)

It often comes as a surprise that an off grid solar inverter doesn't fully power down when your appliances are off. Even in standby mode, it uses a small amount of electricity to keep essential ...



[Does Solar Inverter Work at Night? Unveiling the Facts and](#)

No, a solar inverter does not work at night. This is because solar inverters require sunlight to produce energy, so when the sun goes down, they stop producing electricity. When we ...



[Why Is My Off Grid Inverter Working Better at Night](#)

At night, the off grid solar inverter runs only on the battery bank, which provides a more uniform voltage until it's close to depletion. That steady input means your lights, appliances, and electronics receive a ...

[Why Your Inverter Shuts Down at Night \(And How to Fix It Safely\)](#)

Your inverter shuts down at night even though the battery still has power? This guide explains low voltage cut-off protection, common causes, and how to prevent nightly shutdowns ...



Contact Us

For catalog requests, pricing, or partnerships, please visit:
<https://motocykle3city.pl>