

# Stockholm Positive Energy solar Panel Specifications



## Overview

---

The Federal Energy Management Program (FEMP) provides this tool to federal agencies seeking to procure solar photovoltaic (PV) systems with a customizable set of technical specifications. We'll be going with our customers' favorite Q CELLS Q. You can download the datasheet to follow along. Having trouble with solar panels?

Fill out form and compare offers from solar professionals The first page of the datasheet usually contains the name of a panel, power. The article covers the key specifications of solar panels, including power output, efficiency, voltage, current, and temperature coefficient, as presented in solar panel datasheets, and explains how these factors influence their performance and suitability for various applications. negatively impacted the growth rate of solar panels in 2023. Explore the solar photovoltaic (PV) potential across 171 locations in Sweden. In this work we use the proposed (default) solar radiation model per region of PVGIS and we use city names to refer to specific coordinates on the world map. Both free standing and building.

## Stockholm Positive Energy solar Panel Specifications

---



### [Understand solar panel specification sheets and how to read them](#)

In this article, we will take you along to read the solar panel specifications. Generally speaking, the length of solar panels is between 1m and 2.2m, and the width is between 1m and 1.5m. ...

### [Polycrystalline Solar Modules 235/240/245](#)

Up-to-date features: SCHOTT Solar modules offer up-to-date electrical features such as double insulated PV cables for use with transformerless inverters and locking connectors.



### [Solar Panel Global Database, ENF Photovoltaic Directory](#)

A global solar panel directory with advanced filters that lets you review and compare panels. Pictures, datasheets, PDFs are shown.



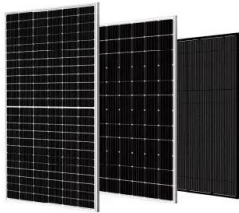
### [What's in the datasheet: A guide to reading solar panel specs](#)

The rated power output of a solar panel is measured in watts (W) and indicates the amount of electricity that the panel can produce under standard test conditions.



### SOLAR PANEL DATASHEETS

NOCT: Irradiance 800 W/m<sup>2</sup>, ambient temperature 20 °C, AM=1.5, wind speed 1 m/s; Best in Class AAA solar simulator (IEC 60904-9) used, power measurement uncertainty is within +/- 3%



### [Solar Panel Datasheet Specifications Explained](#)

The article covers the key specifications of solar panels, including power output, efficiency, voltage, current, and temperature coefficient, as presented in solar panel datasheets, and explains how these ...



### [Stockholm Positive Energy Photovoltaic Panel Specifications](#)

A solar panel spec sheet provides valuable information about the operating parameters of a panel and can help designers, engineers, and installers determine how to configure a solar PV ...



### Products -- Positive Energy

Each module is rated by its DC output power under standard test conditions, and typically ranges from 100 to 365 watts. A photovoltaic system typically includes a panel or an array of solar modules, a ...



### Solar PV potential in Sweden by location

Below is the average daily output per kW of Solar PV installed for each season, along with the ideal solar panel tilt angles calculated for various locations in Sweden.

## Contact Us

---

For catalog requests, pricing, or partnerships, please visit:  
<https://motocykle3city.pl>