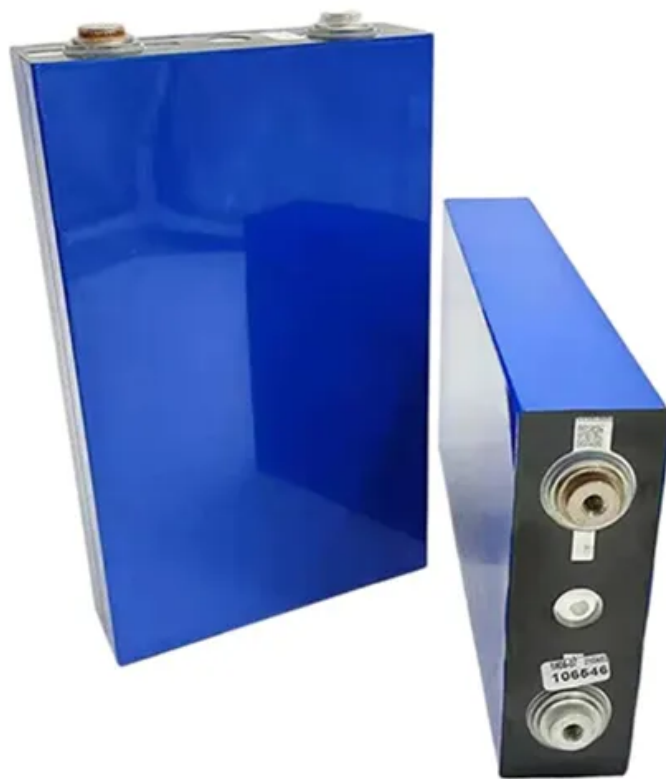


# Photovoltaic panel string polarity



## Overview

---

To identify a solar panel's polarity, check the MC4 connectors (male/female) or use a multimeter (DC voltage mode)—positive terminals show +V (e., +18V for a 20W panel), negative reads -V or zero. A solar panel's polarity is essential when installing or replacing a solar panel. Connect the voltage. In a solar photovoltaic (PV) system, the way modules are electrically interconnected and how DC cables are routed across the rooftop have a direct impact on system safety, performance, and long-term reliability. PV systems are unique electrical installations. Here's how you can determine the polarity of a solar panel using simple methods like visual inspection and voltage testing.

## Photovoltaic panel string polarity

---



### [How to Check Solar Panel Polarity \(Reverses + Fixes\)](#)

If you have an extensive system, it's crucial to ensure that each panel is connected with positive polarity on one end and negative polarity on the other so that power generation flows from one end of your ...

### [Solar Panel Connectors and Cables](#)

One wire is the DC positive (+) and the other is the DC negative (-). Generally, the female MC4 connector is associated with the positive lead and the male connector is associated with the negative lead.



### [PV1-3 Service Bulletin, May 10](#)

Without proper string polarity and installation per the product manual, the customer will have risk of inverter wire-box and electronic circuit damage when solar power is applied to the inverter during startup.



### **Test PV Strings with MCIs**

Connect the voltage meter positive lead to the string's positive conductor. Connect the voltage meter negative lead to the string's negative conductor. Confirm the result is a positive number. If the number is negative, ...



### [Electrical testing standards guide for the PV Industry](#)

Strings that are wired in reverse polarity may short out the other connected strings or damage power electronics. This condition is unlikely to damage any modules, but the risk of electrical arcing appears when you ...



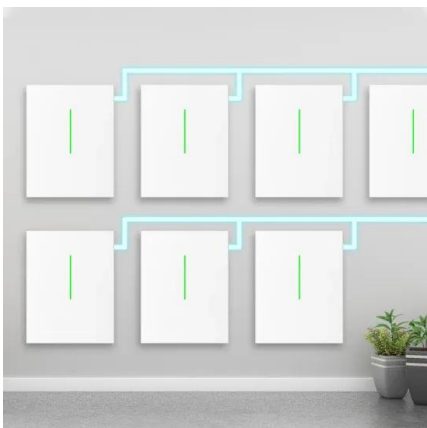
### [Industry Testing Methods for PV Modules and Strings](#)

This article provides an overview of the various techniques available to test PV modules and string homeruns to the inverter. It does not cover TS4-specific testing.



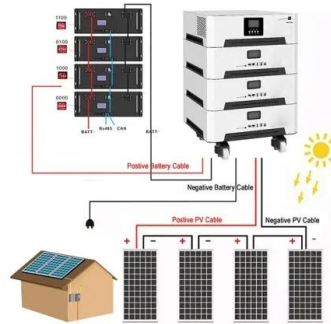
### [How do you know if a solar panel is positive or negative](#)

To identify a solar panel's polarity, check the MC4 connectors (male/female) or use a multimeter (DC voltage mode)--positive terminals show +V (e.g., +18V for a 20W panel), negative reads -V or zero.



### [Identifying Positive and Negative Terminals on a Solar Panel](#)

In this article, we'll explore how to identify the positive and negative terminals of a solar panel, check solar panel polarity, and effectively connect a solar panel to a battery.



### [Troubleshooting Lesser-Known Solar Module Anomalies](#)

What are the symptoms? One group of contiguous panels shows a patchwork pattern (panels with multi-hotspots), usually the whole string. How can you fix it? Start by thoroughly checking string ...

### [PV Module String Wiring Best Practices: Polarity, MC4 Connections, and](#)

The diagram clearly shows this series flow and emphasizes the importance of maintaining consistent polarity throughout the string. A single incorrect connection can disrupt the entire string and ...



## Contact Us

For catalog requests, pricing, or partnerships, please visit:  
<https://motocykle3city.pl>