

# Photovoltaic panel construction precautions



## Overview

---

Working with solar panels requires three fundamental safety considerations: electrical safety, structural integrity, and personal protection equipment (PPE). Professional installers and homeowners must address these aspects before any installation or maintenance work begins. Safety protocols in photovoltaic system installation demand rigorous attention to protect both installers and end-users. Electric shock hazards from high DC voltages require comprehensive arc-flash protection, properly rated personal protective equipment (PPE), and strict lockout-tagout procedures. This introduction to solar construction safety provides information to help develop safe work practices for typical solar construction projects including both solar hot water and solar PV installations. In addition to this manual, attending ongoing OSHA and other safety courses can build. Utility-scale solar installations use rapidly evolving technologies, from photovoltaic (PV) modules and inverters to battery storage and metering. In PV systems, current is "wild" and not limited by electronics.

## Photovoltaic panel construction precautions

---



### [Safety Tips for DIY Solar Panel Installation . Renogy US](#)

DO NOT work on the roof without safety precautions including, but not limited to, fall protection, ladders or stairs, and personal protective equipment. DO NOT install or handle components in hazardous ...

### [Safety precautions for photovoltaic panel installation](#)

To increase the grounding and overall electrical safety of your solar panel system, consider the following measures: Install Ground Fault Protection Devices (GFPDs): The integration of GFPDs into the solar ...



### [Top 3 Solar Panel Safety Precautions . Fluke](#)

These are three of the most common electrical hazards with PV systems that you can encounter, along with specific solar PV safety control measures you can take to reduce their risk.

### [Essential Safety Protocols That Protect Every Solar PV Installation](#)

The implementation of comprehensive safety protocols in photovoltaic installations remains a critical cornerstone of the renewable energy industry. As solar technology continues to ...

### Home Energy Storage (Stackble system)



High Efficiency    Easy installation    Safe and Reliable    Perfect Compatibility

**Product Introduction**

- Scalable from 10 kWh to 50 kWh
- Self-Consumption Optimizer
- Integrated with inverter to avoid the compatibility problem
- LFP battery, safest and long cycle life
- Stackable design for easy installation
- Capable of High-Powered Emergency-Backup and Off-Grid Function

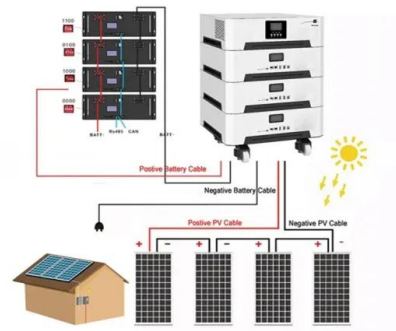


### [Essential Safety Precautions for Solar Panel Installation: Protect](#)

Learn the essential safety precautions for solar panel installation, from proper equipment use and personal protective gear to electrical safety tips and rooftop hazard prevention.

### [What Are the Safety Considerations for Solar Panel Installation?](#)

Discover what are the safety considerations for solar panel installation to ensure a safe and efficient setup.



### [Solar Panel Safety: Essential Precautions That Protect Your Home ...](#)

Working with solar panels requires three fundamental safety considerations: electrical safety, structural integrity, and personal protection equipment (PPE). Professional installers and ...

## [Solar Construction Safety Manual](#)

Solar construction safety, like general construction safety, requires more than knowledge of safety rules; it requires the ability to evaluate unique situations to actively create safe work practices. This manual ...



## [Top 3 Solar Panel Safety Precautions , Fluke](#)

Shock Or Electrocutation from Energized Conductors  
Arc Faults That Spark Fires  
Arc Flash Leading to Explosions  
Choose The Correct Solar Testing Equipment  
About The Expert  
Related Resources  
Large-scale PV arrays with medium and high levels of voltage are susceptible to arc flash. This is especially true when a technician is checking for faults in energized combiner boxes where PV source circuits are combined in parallel to increase current, and when checking medium-to-high voltage switchgear and transformers. An arc flash releases hot See more on fluke Electrical Safety Foundation International

## **Solar PV Electrical Safety**

Learn how to stay safe while working with or around solar panels. Solar disconnects only disconnect buildings from PV panels. Panels can still generate power. If ...

## [Solar PV Electrical Safety](#)

Learn how to stay safe while working with or around solar panels. Solar disconnects only disconnect buildings from PV panels. Panels can still generate power. If possible, turn off the AC side of solar ...



### [Solar Panel Safety Precautions: Essential Guidelines](#)



Whether installing a solar panel for your home or overseeing safety in solar power plant operations, understanding proper safety measures is crucial. This guide covers essential solar panel ...

## Contact Us

---

For catalog requests, pricing, or partnerships, please visit:  
<https://motocykle3city.pl>