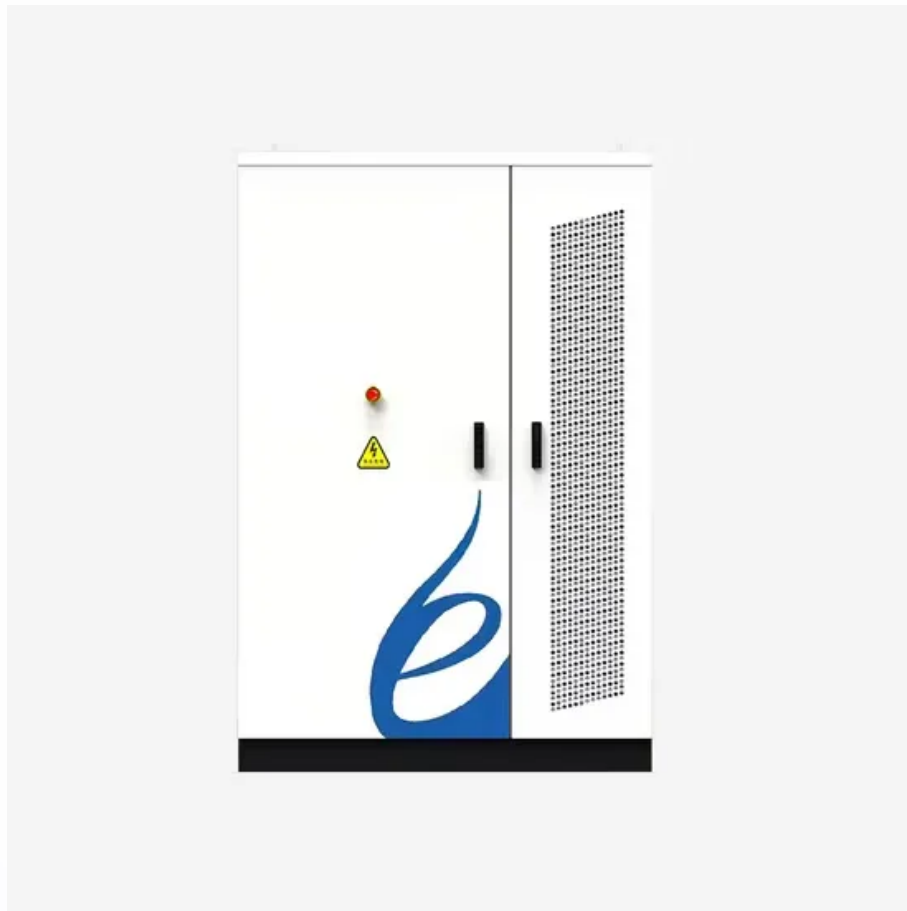


Lifepo4 battery charger in parallel



Lifepo4 battery charger in parallel

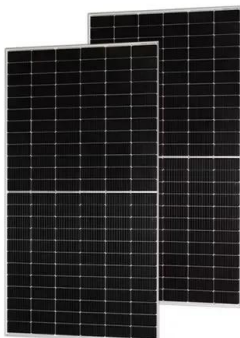


[Connecting LiFePO4 batteries in parallel or series](#)

When connecting two batteries together, the "diagonal parallel" method is fine to use, for 3 or more batteries, it is always recommended to connect to a busbar system with equal length cables, then take all loads and ...

[LiFePO4 Battery Series and Parallel Connection Guide](#)

LiFePO4 batteries can be connected in series (to increase voltage) or parallel (to increase capacity). Below is a detailed breakdown of configurations, best practices, and critical considerations based ...



[How To Charge LiFePO4 Batteries in Parallel?](#)

How To Charge LiFePO4 Batteries In Parallel? To charge LiFePO4 batteries in a parallel circuit, you have to connect the positive output of your charger to the positive terminal of your batteries and the ...

[How Do You Charge a LiFePO4 Battery in Parallel?](#)

Do I need special equipment to charge LiFePO4 batteries in parallel? While not strictly necessary, using a charger with balancing capabilities ensures even charging across all connected cells.



[LiFePO4 Battery Banks in Parallel](#)

Whether you're expanding your DIY solar storage, setting up a battery backup generator, or preparing for the next power outage, understanding how to wire LiFePO4 battery banks in parallel is key.



[How to Avoid Common LiFePO4 Parallel Setup Mistakes?](#)

Properly setting up LiFePO4 batteries in parallel is essential to maximize performance, safety, and battery lifespan. Common mistakes like mismatched voltages, uneven wiring, and neglecting battery management ...



[Can You Connect Two or More LiFePO4 Batteries in Parallel?](#)

Yes, you can connect two or more LiFePO4 batteries in parallel to increase capacity while maintaining the same voltage. Parallel connections are safe for LiFePO4 batteries if they share identical voltage, state of ...



[How To Charge LiFePO4 Battery Safely? A Comprehensive Guide](#)

In this article, we are here to explore that how to charge your LiFePO4 battery with different voltage, learn about charging in parallel and series, and choose the best LiFePO4 battery charger.



[How to Properly Charge LiFePO4 Batteries After Series and Parallel](#)

After parallel connection, the charging voltage remains the standard 12V LiFePO4 charging voltage (14.2V~14.6V). A 12V LiFePO4-specific charger must be used. After parallel connection, the total ...

[Charging LiFePO4 Batteries In Parallel And Series Guide](#)

This article delves into the nuances of charging LiFePO4 batteries in parallel and series arrangements, highlighting the best practices, benefits, and considerations one must consider for optimal ...



Contact Us

For catalog requests, pricing, or partnerships, please visit:
<https://motocykle3city.pl>