

Overview

Check your battery's state of charge monthly and recharge before it drops below 50% to prevent sulfation damage that permanently reduces capacity. Store your solar generator in temperatures between 50-77°F, as every 15-degree increase above this range can cut battery lifespan in half. Scroll to the bottom of any page to find a sun or moon icon to turn dark mode on or off!

Idle Consumption?

Random question to pose here to see if anyone can explain or has had a similar experience. On my EG4 6000ex unit I had been pulling quite a bit of wattage from just idle consumption. I know. Get help with your solar install, or just post some cool pics of your install! We don't tolerate abuse or unkind / snarky / picky comments, play nice ☺☺☺☺ Battery discharge when idle?

I've got a sunsynk 5kw inverter, 4. 2kw of panels and a pylontech US5000 battery. The system has only been installed. Idle consumption is the name for the hidden power drain that can throw off your calculations when estimating how much power you have left in your power station's batteries. 2 kWh! It it really this inefficient?

I have this set up primarily for emergency backup. It's a little more complex than a constant fraction of the load, because although the IGBTs have a relatively constant voltage drop, the battery-side MOSFETs have a. Is it Normal for my Generator to Surge at Idle?

No, a generator that surges at idle is running at higher air to fuel ratio than normal and is starved for gasoline in the combustion process.

Hypoxia solar generator idle



The Solar Lab

Idle consumption is the name for the hidden power drain that can throw off your calculations when estimating how much power you have left in your power station's batteries. It's also an important ...

[Hypoxia solar generator idle](#)

Is it Normal for my Generator to Surge at Idle?
No, a generator that surges at idle is running at higher air to fuel ratio than normal and is starved for gasoline in the combustion process.



Idle Consumption?

Obviously the SolarPower app doesn't display idle consumption but I'm seeing fluctuations on the AC output side anyway. I know this sounds silly, but do the starlink mesh nodes ...

[Why Your Solar Generator Battery Dies Too Soon \(And How to Make ...](#)

Your solar generator battery represents the heart of your portable power system, and understanding how to care for it means the difference between 3 years and 10 years of reliable service.



[Top Mistakes to Avoid With Solar Generators](#)

Conclusion Navigating the complexities of solar generator use involves understanding common errors to make the most out of your investment. From choosing the correct model based on ...



[Why does my inverter enter into idle mode? - Solax Power Help Center](#)

When Battery SOC < min soc and there is no pv or it is not within the battery charging period, if this situation lasts for 30s, the inverter will go into idle mode to lower self-consumption.



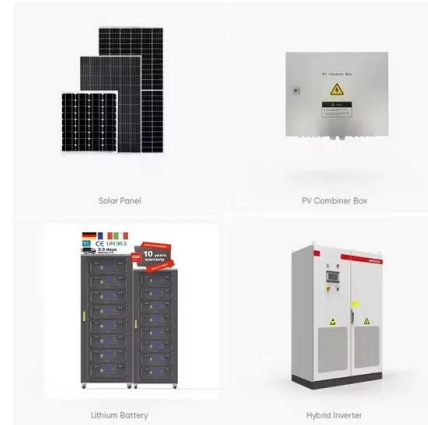
[Battery discharge when idle? : r/SolarUK](#)

The battery charges as expected from solar and discharges as expected when it's at higher soc than configured. When the battery reaches the target soc, it still seems to trickle discharge.



200 Watts at idle?!!!

The idle power consumption on Outback inverters is pretty low, generally less than 35W, and the Skybox has similar specs. A 200W draw implies a load, parasitic or otherwise, somewhere.



[System Configuration for an Extreme-Range Normobaric Hypoxia Generator](#)

This manuscript describes the development of an extreme-range normobaric hypoxia environment (FO 2 6.5%; PO 2 31.4 kPa; simulated altitude 9300 m) using readily available commercial equipment and ...

Idle and Load consumption

It consumes (wastes) more power when the inverter is powering a load, but then it's not idle, so it's not idle consumption. Most of the PIP series have about 93% efficiency on the inverters, ...



Contact Us

For catalog requests, pricing, or partnerships, please visit:
<https://motocykle3city.pl>