

How many watts per square meter of crystalline silicon solar energy



Overview

Here's what's shocking: A single square meter of solar panel can generate anywhere from 150 to 250 watts under ideal conditions. But "ideal" rarely exists in real life. Under optimal conditions (5 peak sun hours): At noon under direct sunlight: *Note: 1m². What Determines the Wattage of Crystalline Silicon Solar Panels?

Crystalline silicon solar panels, the most widely used type globally, typically range from 250 to 400 watts under standard test conditions. But wait – real-world performance depends on more than just lab numbers. Panel Efficiency: Solar panel efficiency determines how well the panel converts sunlight into electricity.

How many watts per square meter of crystalline silicon solar energy

[How many watts of solar photovoltaic power generation per square meter](#)

The average solar panel generates between 150 to 200 watts per square meter, 2. This output depends on factors like location, orientation, and panel efficiency, 3. Enhanced technologies ...



[Solar Power Per Square Meter Calculator](#)

Calculate solar panel energy output per square meter. Get accurate daily, monthly, and annual production estimates based on location, panel specs, and system losses.



[Crystalline Silicon Photovoltaics Research](#)

Monocrystalline silicon represented 96% of global solar shipments in 2022, making it the most common absorber material in today's solar modules. The remaining 4% consists of other materials, mostly ...

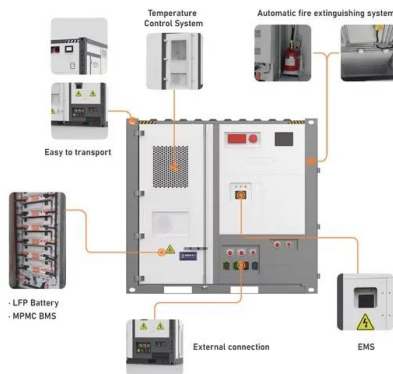
[How many watts per square meter of crystalline silicon solar energy](#)

A crystalline silicon solar panel typically produces between 250 and 400 watts, with the exact output contingent upon factors such as panel size, efficiency, and environmental



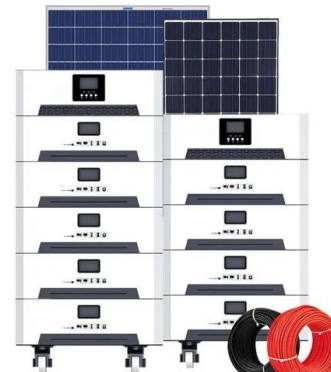
[How Many Watts Per Square Foot Is a Solar Panel?](#)

The power output of a solar panel is most accurately measured by its power density, which is expressed in watts per square foot (W/sq ft). This metric represents the amount of electricity a panel can ...



[Solar Power per Square Meter Calculator](#)

The amount of solar intensity received by the solar panels is measured in terms of square per meter. The sunlight received per square meter is termed solar irradiance. As per the ...



[Solar Panel Watts Per Square Meter Explained](#)

Learn how to measure solar panel efficiency using solar panel watts per square meter with this comprehensive guide.



[Solar Panel Output Per Square Meter](#)

Discover how much electricity solar panels generate per square meter, explore efficiency factors, technology comparisons, and future innovations in photovoltaic energy.



[Understanding Crystalline Silicon Solar Panel Wattage: A ...](#)

Summary: Wondering how much power a crystalline silicon solar panel can generate? This guide breaks down wattage ranges, efficiency factors, and real-world applications.

[How To Calculate Solar Panel Output? - Glyde Solar](#)

The amount of electricity that the solar panel produces under perfect conditions (known as peak sun), also known as "rated capacity" or 'rated output,' is 1,000 watts (or 1 kW) of sunshine per square ...



Contact Us

For catalog requests, pricing, or partnerships, please visit:
<https://motocykle3city.pl>