

How many square meters does a 1kW photovoltaic panel take



Overview

For a 1 kW solar energy system, an average area of 6 to 8 m² is required. This calculation may vary depending on panel efficiency, the technology used, and the installation angle. How many square meters of space is required per kw solar panel?

The area required for each kilowatt (kW) solar panel system is approximately 5 to 10 square meters, depending on the panel efficiency and wattage. Each panel has an area of about 1.8 square meters, thereby implying that the. Solar panel area refers to the physical size of a solar panel typically measured in square meters (m²) or square feet (ft²). It indicates the surface area available for collecting sunlight and converting it into electricity.

How many square meters does a 1kW photovoltaic panel take

[area required per kW of solar panels](#)

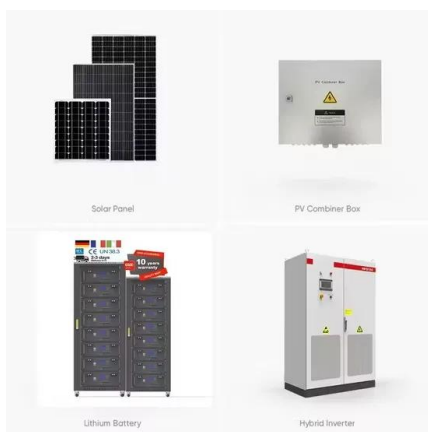
On average, a 1 kW solar panel system will require between 80 to 100 square feet (7.5 to 9.5 square meters). This means, for every kilowatt of power you plan to generate, you'll need this ...



51.2V 150AH, 7.68KWH

[Solar Panel Output Per Square Meter](#)

Discover how much electricity solar panels generate per square meter, explore efficiency factors, technology comparisons, and future innovations in photovoltaic energy.



[How Much Area Required for 1kW Solar Plant?](#)

Knowing the size of a 1kW solar panel in terms of energy generation and dimensions is crucial. Each panel has an area of about 1.6-1.8 square meters, thereby implying that the area required for 1kW ...

[How Many m² Are Needed for 1 kW of Solar Panels?](#)

For a 1 kW solar energy system, an average area of 6 to 8 m² is required. This calculation may vary depending on panel efficiency, the technology used, and the installation angle. When high ...



[How much area is required for a 1 kW rooftop solar PV system?](#)

Determine the area needed for a 1kW rooftop solar PV system: It is well-known that the size of the set-up depends on the available rooftop space. What if one wants to do a 1kW rooftop ...



[Solar Power Per Square Meter Calculator](#)

Calculate solar panel energy output per square meter. Get accurate daily, monthly, and annual production estimates based on location, panel specs, and system losses.



[Solar Panel Area per kW Calculator](#)

Definition: This calculator estimates the area of solar panels needed to generate 1 kW of power based on panel efficiency. Purpose: It helps solar installers and homeowners determine how much roof ...



[How many square meters of space is required per kw solar panel?](#)

Typical solar panels range from 250W to 400W, translating to an area of about 1.6 to 2.2 square meters per panel, leading to a total space requirement of around 5 to 10 square meters for 1 kW.



[What is the Area of a 1 kW Solar Panel?](#)

Therefore, in order for this solar panel to produce 1000 watts of electricity, it would need an area of approximately 5 square meters (1000 watts / 200 watts = 5 square meters).



[Solar Power per Square Meter Calculator](#)

Factors to Consider for Solar Panel Output Per Square Meter. Region: If you are living in countries near to poles, you will receive less sunlight. In comparison to the people living in regions ...



Contact Us

For catalog requests, pricing, or partnerships, please visit:
<https://motocykle3city.pl>