

Electricity generation seoul



Overview

Seoul, 2 July - For the first time on record, fossil fuels accounted for less than half (49.8 TWh) of South Korea's total electricity generation, according to data from global energy think tank Ember for April 2025. The electricity produced by this generator is used to power the bus stop monitoring system and information terminal that shows bus arrival times. It can also be used to charge mobile phones. The main driver of the. Seoul launched the second phase in August 2014 after its success with the first phase between April 2012 and June 2014. The One Less Nuclear Power Plant initiative, "Seoul Sustainable Energy Action Plan" is a local energy transition policy, which aims to reduce Seoul's reliance on nuclear power. South Korea's recently finalized 11th Basic Plan for Long-Term Electricity Supply and Demand (BPLE) makes some progress toward reaching its decarbonization goals by reducing fossil fuel dependency and increasing renewable energy generation in its power mix.

Electricity generation seoul



[South Korea's Green Transition Hinges on Expanding Clean Power ...](#)

Based on the findings of New Energy Outlook: South Korea, in order to be on track with a net-zero-by-2050 pathway, emissions from electricity generation need to drop by more than two ...

[South Korea's future power grid to tackle curtailment and price](#)

This plan outlines the country's energy strategy, including future energy needs, capacity distribution, and renewable energy initiatives. It also serves as a key reference for other government ...



[Fossil fuels fall below 50% of South Korea's electricity for the first](#)

The role of fossil fuels in South Korea's power mix is decreasing as the country turns to new sources of electricity. Recent months show faster deployment of solar power, but South Korea is ...

[South Korea's 11th power plan makes partial progress towards](#)

The plan makes some progress toward the country's decarbonization goals, reflecting calls to reduce fossil fuel dependency in the power generation mix while increasing the use of carbon ...



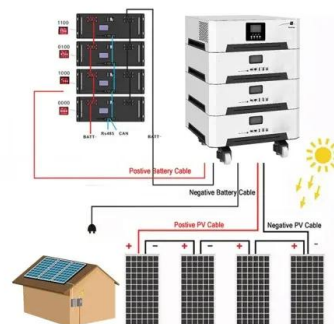
[Transitioning to 80% Carbon-Free Electricity Generation](#)

What clean energy goals are technically and economically feasible, given inherent uncertainties about electricity demand growth, fossil fuel prices, and RE and energy storage costs?

[Seoul Sustainable Energy Action Plan](#)

Summary
Key directions
Overview
Core values
10 Key Action Plans
Brand identity
Slogans
External links

Ten million citizens will be the consumers and producers of energy to decentralize the city's power generation. Core projects include promoting mini PV panels easily installable on apartment balconies, establishing a civic fund for expansion of PV power generation, and requiring new buildings to generate energy, amounting up to 20% of their energy consumption, from renewable sources and decentralized system.



[Seoul Sustainable Energy Action Plan](#)

Seoul aims to become a safe and responsible city by ensuring sustainable energy production in case of a failure in energy supply and reducing its dependence on energy supplied outside the city. Along the ...



[A clean energy Korea by 2035: Transitioning to 80% carbon-free](#)

Transitioning to an electricity system with 80% clean energy generation would require overcoming barriers to the development and integration of wind generation, solar generation, and ...



[Energy Generated by Citizens , Seoul Metropolitan Government](#)

The metropolis of Seoul accounts for one-tenth of Korea's total energy consumption. However, the city's electricity self-sufficiency rate is a mere five percent. How can this supply ...



[Energy Generated by Citizens , Seoul Metropolitan Government](#)

Electricity can be generated in two main ways: by harnessing the heat from burning fuels or nuclear reactions in the form of steam (thermal power) or by capturing the energy of natural forces ...



Contact Us

For catalog requests, pricing, or partnerships, please visit:
<https://motocykle3city.pl>