

Are photovoltaic panels installed in up down left and right



Overview

To maximize energy generation, panels must be positioned at the right angle and direction based on location and weather data. Optimal power is harnessed when sunlight hits perpendicularly. Orientation Impact is Massive: The difference between optimal and poor solar panel placement can impact energy production by up to 30%, making proper positioning one of the most critical factors in maximizing your solar investment return. Magnetic South Matters: Using magnetic south. Whether to position panels in landscape or portrait orientation can significantly impact efficiency, installation feasibility, and overall energy yield. Not only does it provide a clean and sustainable source of energy, but it also offers significant savings on electricity bills and potential tax credits or incentives from. Here in this tutorial we will discuss solar panel orientation and positioning. Photovoltaic solar power offers many advantages in the generation of electricity. It has zero raw fuel costs, unlimited supply and no environmental issues such as transport, storage, or pollution. Therefore, the more sun rays the.

Are photovoltaic panels installed in up down left and right



[The Best Angle for Solar Panel Installation](#)

In general, solar panels should be installed so the sunlight hits them at as close to a perpendicular 90-degree angle for as long as possible during the day. To achieve that goal, most ...

[Understanding Solar Panel Orientation: A Complete Tutorial on Which ...](#)

This article delves into the critical considerations for solar panel placement, providing insights that can help homeowners maximize their investment in renewable energy.



[Solar Panel Orientation Guide](#)

This comprehensive guide will walk you through the key factors that impact solar panel orientation and provide practical tips to ensure you're getting the most out of your solar power.

[Orientation of solar panels](#)

If you want to make the most of your solar installation, you should choose the proper orientation and tilt for PV panels. Our guide will help you do just that.

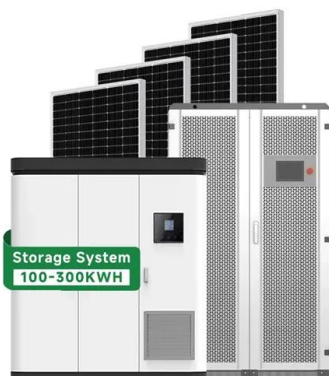


[Optimal Orientation for Solar Panels: Landscape vs. Portrait](#)

However, a critical decision in solar panel installation often goes overlooked--the orientation of the panels. Whether to position panels in landscape or portrait orientation can significantly impact ...

[How to Find the Best Orientation and Angle of Solar Panels?](#)

Putting solar panels at the optimal angle and to the best orientation is essential to obtain the maximum energy in a solar power system. To maximize the energy conversion efficiency, use proper mount ...



[Does It Matter If Solar Panels Are Horizontal Or Vertical?](#)

Solar panels are mounted to the rafters on your roof using "rails." Since panels are not as wide as they are tall, it takes fewer rails to install the panels in a vertical orientation than in a ...

[Solar Panel Orientation and Positioning for Best Angle](#)

A solar panel or solar array will capture more energy if it is facing directly at the sun, perpendicular to the straight line between the position of the panels installation and the sun.



[Solar Panel Direction & Orientation: 2025 Complete Guide](#)

Whether you're planning a new installation or optimizing an existing system, understanding solar panel direction and orientation is crucial for maximizing your system's efficiency ...

[Solar Panel Orientation Guide: Vertical vs. Horizontal](#)

In this Solar Panel Orientation Guide, we'll explore the factors that influence the efficiency of solar panels based on their orientation and help you decide the best setup for your needs.



Contact Us

For catalog requests, pricing, or partnerships, please visit:
<https://motocykle3city.pl>