

5kW three-phase photovoltaic grid-connected inverter parameters



Overview

5000W three phase pure sine wave solar grid tie inverter with 200V-820V DC wide input voltage range, customized 208V/ 380V/ 480V AC output voltage to adapt to the needs of different occasions. IP65 compatible, no transformer type, 2 MPPT with various communication modes of 5kw on. 5kw three-phase photovoltaic grid-c rter is the core part of solar PV grid-connected power generation system. The sunlight can be converted through PV panel to DC power, which further converted by grid-tied inverter to the sine AC current with the same frequency and phase position as the public. Choosing a robust 5kW 3-phase solar inverter involves balancing efficiency, protection features, and parallel expansion options. The 3-phase models below are among the most capable in the 5–12 kW range, offering multiple MPPT inputs, parallel capabilities, and built-in WiFi for monitoring. This. GINLONG TECHNOLOGIES CO. input voltage Rated voltage Start-up voltage MPPT voltage range Max. 0 % at rated load with ideal grid voltage. If needed, inverter can provide grid support at any time (even during night) through reactive power compensation. Smart Communications •Ground fault monitoring, anti-islanding protection, DC reverse-polarity protection, overvoltage/overcurrent safeguards, and surge protection. Global Compliance & Quality 7. The table below summarizes the top 5 recommended.

5kW three-phase photovoltaic grid-connected inverter parameters



[Best 5kW 3-Phase Solar Inverters for Home, Cabin, and Off-Grid Use](#)

Choosing a robust 5kW 3-phase solar inverter involves balancing efficiency, protection features, and parallel expansion options. The 3-phase models below are among the most capable in ...

[5000 Watt Three Phase Grid Tie Solar Inverter](#)

5000W three phase pure sine wave solar grid tie inverter with 200V-820V DC wide input voltage range, customized 208V/ 380V/ 480V AC output voltage to adapt to the needs of different occasions. IP65 ...



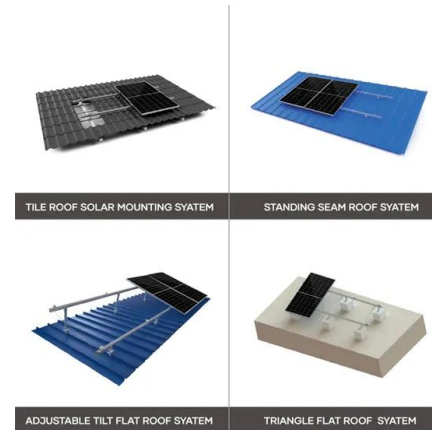
[Best 5kW 3 Phase Solar Inverters for Efficient Power Solutions](#)

These inverters convert DC from solar panels into usable AC power, supporting high loads with stable output. The table below summarizes the top 5 recommended inverters, selected for their ...



[Solis Three Phase Grid-Tied Inverters](#)

Supports export power control AFCI protection, proactively reduces fire risk 24-hour load consumption monitoring Adaptive weak grid IP66



[5Kw Three Phase On Grid Inverter](#)

High-efficiency 5Kw Three Phase On-Grid Inverter for seamless solar power conversion. Reliable, safe, and perfect for homes. Order now!



[KSTAR Blue-5KT-M1 String PV Inverter , 5KW, 98.4% Efficiency, 3-Phase](#)

With advanced MPPT technology, high voltage input capacity, and flexible communication options, this 5 kW inverter maximizes solar energy yield and is built to withstand diverse environmental conditions.



[5kw On Grid Solar Inverter Price \(February 2026 \)](#)

Two MPP Trackers are included in the Growatt MOD 5000 TL3-X 3-phase inverter to differentiate two orientations, inclination angles, or shadow fields. As a result, you may connect two ...



[5kw three-phase photovoltaic grid-connected inverter technical ...](#)

The inverter is a three-phase series photovoltaic grid-connected inverter, which can convert the direct current generated by photovoltaic solar panels into alternating current to meet the



[Technical Datasheet: PE-GTSI-5K0-3H](#)

With the maximum continuous grid current of 8.5 A (per phase), the inverter has excellent overload capability and can feed upto 6 KW power into the grid at nominal grid voltage of 415 V (l-l).

[JINSUN 5Kw-10Kw Three Phase Grid-connected Solar Inverter ...](#)

- oUp to 98.6% (single-phase) and 98.8% (three-phase) efficiency
- oLow start-up voltage (40V/50V)
- oStable performance at 50? without derating 2. Stronger Compatibility
- oWide battery voltage range ...



Contact Us

For catalog requests, pricing, or partnerships, please visit:
<https://motocykle3city.pl>