

# 12 volt lithium battery bms

---



## 12 volt lithium battery bms

---



### Victron Smart BMS 12/200

The Smart BMS 12/200 is an all-in-one Battery Management system for Victron Lithium-Iron-Phosphate (LiFePO4) Smart Batteries. It is designed for 12V systems with a 12V alternator. It combines a ...

### [Best Battery Management Systems 12s Bms \[Updated On](#)

Many users assume all 12S BMS are basically the same, but my hands-on testing proves otherwise. I've personally layered through several options, paying close attention to protection ...



### [12V 100A 4Series BMS Protection Board with Balancing with](#)

Balance function the board equipped ensures that each battery cell can be fully charged at the same time. This product is a battery protection BMS board which is designed for 4 series 12V ...

### [Powerful LiFePO4 BMS for Optimal Battery Management](#)

Browse our collection of high-performance LiFePO4 BMS models, including Daly 36V 300A, Daly 12V 300A, JBD 12V 120A, and more. Experience advanced features like Bluetooth connectivity and ...



### Smart BMS CL 12-100

The Smart BMS CL 12-100 is a Battery Management system for Victron lithium-iron-phosphate (LiFePO4) Smart Batteries. It has been specifically designed for 12V systems with a 12V alternator.



### Smart BMS 12-200

It combines a Current Limiter, Battery Combiner and Battery Protector in a robust and compact solution and lets you safely connect any size 12V alternator (and starter battery), loads and chargers to Smart ...



### [12V Battery Management Systems \(BMS\) - ABLIC Inc.](#)

Since 12V lead-acid batteries are expected to be prohibited in the near future, battery manufacturers are working on developing a 12V lithium-ion battery replacement.

[Smart BMS 4S 12V 120A Lithium Lifepo4 Battery Management with ...](#)

It is an intelligent protection board scheme specially designed for 4 series battery packs of start-up battery and electric energy storage products. It is suitable for lithium batteries with different chemical ...

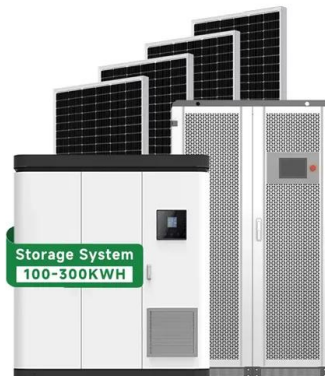


[BMS for 12 or 24 Volt Battery Packs , Electric Car Parts Co](#)

The Chargery BMS is designed especially for 12 or 24 volt LiFePo4 and Li-NCM lithium battery packs applied to an energy storage system or an Electric Vehicle (EV) such as an E-Motorcycle, E-Scooter, ...

[JKBMS Smart BMS 4S-8S 12V-24V 300A 2A Active Balance Build-in ...](#)

Wide Application: This versatile BMS works with Li-ion, LiFePO4, and LTO batteries. Ideal for RV, Solar Panel, and UPS Power Supply and so on, it offers seamless integration and top ...



**Contact Us**

For catalog requests, pricing, or partnerships, please visit:  
<https://motocykle3city.pl>